



The Major Arcana

“Your vision will become clear only when you look into your own heart. The one who looks outside dreams, while the one who looks inside awakens.” —Carl Jung

To learn Tarot is to embrace your humanity or Earth School Journey—while honoring, reclaiming, and integrating your Spiritual essence.

We begin our Tarot lessons with the Major Arcana, 22-cards which represent the big step-changes in our Earth School learning. This part of the deck takes us on the S/Hero's Journey of soul growth, challenges, integration, and expansion. The Major Arcana is a non-linear awakening process that can take years, decades, or lifetimes to move through. These lessons can pack a punch or shower you with blessings. Take your time with them. My experience has been that it's best to soften into their teaching, their lesson, their wisdom...until it feels it's your own.

Let's begin...

How to Read Reverse Cards

I'd like to take a moment to mention how to address the energy of 'reversed' cards. This topic always gets lots of energy in my classes, which is funny to me because it doesn't really come up as often as people anticipate.

First, if you are like me, you read with all of your cards facing the same direction. You'll notice that the rose on the back of the Beauty of Tarot is intentionally set off-center so you can tell before you flip the card over if it's facing in the same direction as the rest of the deck. When you get a card that's upside down, that will indicate that the particular energy of the card is currently blocked or being avoided by your client. This is not a problem to be fixed; it's an area to bring into your client's awareness. Consider this an invitation from the Universe, “if you would like to address this area, now would be a good time to do that.” You don't have to flip out or judge your client as 'less than'. This is a move we all make—until we don't.

Second, if you don't read with your cards all facing in the same direction, then there's no need to read cards that are upside down with 'reversed' energy flow because the cards in your deck are in random directions to begin.

Third, I leave the card reversed in the spread. I know many readers who flip it because clients can get uncomfortable with it. When possible, I try not to interfere with the plan of the Divine.

The Fool

- ❖ New beginning!! Excitement. Big opening in life. Can be overwhelming.
- ❖ This is the beginning of the journey. It can feel like leaping off a cliff into the unknown to learn and discover the “more-ness” of the Universe. Your job is to trust that one of two things will happen: the ground will rise up to support you, or you will be taught to fly.
- ❖ The energy of The Fool card is too great; it’s irresistible and unavoidable. People are sometimes afraid and ask, “*What if I miss my big opportunity?*” This energy is too big to miss. If you hide yourself in a closet, you still won’t miss this.
- ❖ Your job is to show up and be true to the process and the flow of energy; do not concern yourself with the end state.
- ❖ The Fool doesn’t imply idiocy, more ignorance, or naiveté about you in this area. You’ve never been here before, so how can you know?
- ❖ The energy of this card is: Go for it! It’s going to be a great ride; just keep with the flow of where the energy is taking you, and say, “YES!”



The Magician



- ❖ As above, so below: As the heavens have prescribed for you, it’s available to manifest here on earth. It’s up to you to show up, be present, and engage.
- ❖ This is where Divine grace meets earthly effort; when these qualities are working together like wings of a bird, you can soar.
- ❖ All elements are represented on this card, calling in a state of responsibility to you and inviting in a state of balance within you from your responsibility and accountability.
- ❖ In what areas of your life do you need to take responsibility or develop skills?
- ❖ This card teaches us that what we create in our life is directly aligned to what and how we choose to be responsible for our own gifts, inspirations, and intuitional guidance.

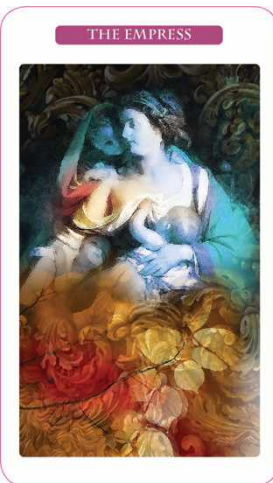
The High Priestess

- ❖ She is the Goddess and Sacred Guide of the Inner World.
- ❖ She represents higher wisdom of your inner sanctuary and Nature. Her guidance is instinctual, primordial, connected to our sacred soul's path.
- ❖ She balances the places of dark and light in our world. She will not back away from the dark or the unconscious parts of us. She can teach us to transcend shadows and bring us into our own light.
- ❖ She inspires us to be honest with ourselves by being in touch with all aspects of ourselves and calls us inside. This is a call to travel inside yourself with The High Priestess as your guide.
- ❖ In addition to the connection to the spiritual domains, The High Priestess also connects us to nature and the nature spirits.
- ❖ She unifies the inner knowing of the heart and the intellectual understanding of the mind.
- ❖ Her Universal prayer: May all go well.



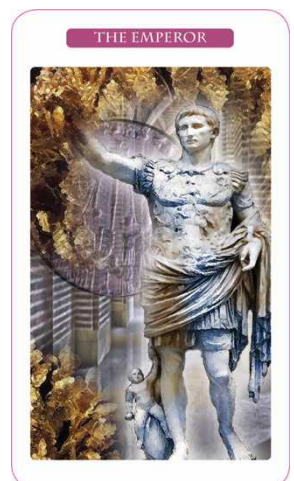
The Empress

- ❖ She is the quintessential mother—very nurturing, unconditional love.
- ❖ Represents pregnancy—wanting it or fearing it, possibility, or likelihood of becoming pregnant. Life-giver and healer.
- ❖ She is a gifted “woman-ifester” and bringer of physical gifts. 1+1=3
- ❖ Earthy woman rooted in the physical world, not flighty or distracted by heady things.
- ❖ Creative or creating things in a new way or a new area of focus.
- ❖ She can bring her inner (female) to the outer world (male) such as art, babies, business, etc.



The Emperor

- ❖ He is the quintessential patriarch—strong, loving, independent, provider.
- ❖ In the light: solid, secure, protector of all things sacred. Typically, a great leader, comfortable in charge, and the smartest person in the room.
- ❖ In the shadow: rigid, controlling, overbearing, egotistical, entitled and offended when people don't bow to him.
- ❖ Centered in thinking vs. feeling.
- ❖ Great at manifesting if flowing in his own current.
- ❖ Doesn't like to report to anyone, so owns his own business, or a President, or has his own “territory” or “division” at minimum.
- ❖ Represents “societal norms” or obligations requiring one to comply and acquiesce.



THE HIEROPHANT



The Hierophant

- ❖ Wounded Healer.
- ❖ This part of the journey invites us to stay on our inner journey (from the underworld of the High Priestess) to address and heal soul wounds or limitations. This is a teaching phase of the journey.
- ❖ This can represent someone who takes care of others, or can even “heal” others, but is unable to fully heal or take care of herself/himself.
- ❖ Historically, this is the priest or an authority figure. Today, we have a doctor, therapist, counselor, holistic healer, coach, yogi, or guru.
- ❖ If someone has a conflict with social norms of The Emperor, it can land you here in the light of The Hierophant, calling you to come into your own. (For example, if you married because you thought you should, you might see a therapist or a lawyer.)
- ❖ Someone pushing back on authority or looking for someone to give his or her authority to.

The Lovers

- ❖ Decisions must be made—often around a romantic partner, but not exclusive to that domain. Can be business partners or a personal situation—not necessarily romantic, a friendship or family, or a business decision.
- ❖ After taking time to heal with The Hierophant, you can make better choices, so life will bring you to this gate.
- ❖ You can now make choices that best reflect the integration of one holistic person.
- ❖ The Lovers question to answer: what choice reflects my highest good, harm to none?
- ❖ Carries the energy of the Gemini, trying to unite energy into one.

THE LOVERS



THE CHARIOT

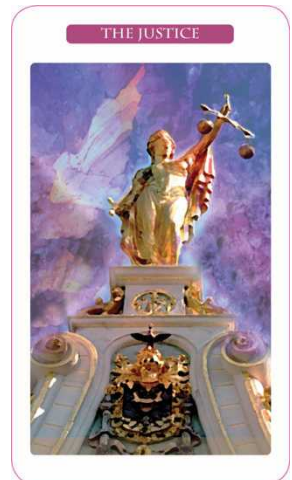


The Chariot

- ❖ Go Girl card!!
- ❖ The more integrated someone is the better decision-making, which means the faster s/he can progress in his or her journey.
- ❖ The focus is on moving forward—get into action! Focus on your destination.
- ❖ There’s a balance energy to this card; gotta be balanced to move forward quickly without losing it. Lose the balance, and you’ll flip the chariot and be out of the game.
- ❖ Literally can mean someone is changing jobs, homes, or relationships.
- ❖ Reversed: someone is stuck and needs to get into motion—any motion to start the momentum.

The Justice

- ❖ The Fool has decided he will not turn to The Emperor (political ruler) or The Hierophant (religious ruler) to solve his problems. He is empowered and turning to the left side of his brain—that of right and wrong.
- ❖ Someone entrenched in the law (i.e., lawyer, being sued, etc.).
- ❖ Important to understand that law is human-made vs. the long-term Universe Law, which can take much longer to play out. Legal rulings don't necessarily dictate ultimate "right or wrong."
- ❖ If you haven't let go of the past, you may be creating baggage, which can deplete you, limit you or derail your journey.
- ❖ Karmic balancing.
- ❖ Call for balance.
- ❖ Call for impartial decision-making.
- ❖ A need for self-forgiveness.
- ❖ Watch for suicidal tendencies.



The Strength

- ❖ Connecting with your centeredness and courage.
- ❖ A call to your solar plexus, your center of self-esteem; you knowing yourself; so, secure with yourself, you can put your head in the mouth of a lion and not blink.
- ❖ Slaying the ego; killing off illusions, and releasing pressure of people who thought they knew what you were or what they needed you to be. You are your own person. Fully.
- ❖ Taming the beast inside you;—releasing addictions.
- ❖ The cultivation of patience, taking a holistic perspective.



The Temperance

- ❖ Usually, one of the more beautiful cards in the deck. Signifies that you are ready to let go of issues from the past and be in the flow of the Universal Heart. This is a rebirthing cycle.
- ❖ You are in a balanced place of emotions and enjoying peace and calmness. Because you are so centered and sure of yourself after the Strength card, you are flowing with possibilities with ease.
- ❖ Overwhelmed with love and grace.
- ❖ Pregnancy.
- ❖ Reversed: signaling an emotional or chemical imbalance or addiction.



THE HERMIT



The Hermit

- ❖ I think I understand everything now; I'm going to be with myself to integrate my learning, and allow for deep understanding, clarity, and peace, and to fuel the inner flames of my soul's illumination.
- ❖ Time for meditation and other spiritual practices.
- ❖ If I operate from my heart center (coming off the Strength and Temperance cards), I'm too sensitive, and the world isn't gentle enough, so I seek solitude.
- ❖ There's a purification and wisdom that come from seclusion (retreats).
- ❖ This is a time to go inside. You can be alone, but not be lonely.

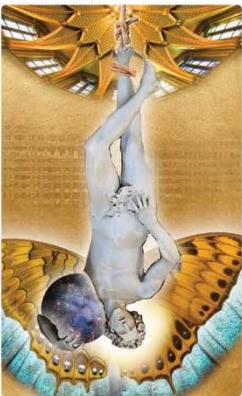
The Wheel of Fortune

- ❖ Now is the time of great opportunity. Through focusing your energy (actions, thoughts, and vibration), you can control your destiny.
- ❖ This is the *Law of Attraction in action*: focus on what you want, where you want to be, and match your emotions and actions to that state, and Universe will bring it to you.
- ❖ Clear vision is required to prevent you from “getting off the wheel” at someone else's stop.
- ❖ This is the time to rethink and review relationships, jobs, locations, health, etc.
- ❖ Opportunity is all around you—be open, be positive, and engage with life!
- ❖ If something doesn't come to you, trust that it wasn't yours at this time.
- ❖ Time to be selective of the company you keep (physically, mentally, emotionally).

THE WHEEL OF FORTUNE



THE HANGED MAN



The Hanged Man

- ❖ Leading with the crown chakra, one of Divine guidance, not the root chakra, which represents survival and earthly concerns.
- ❖ Surrender—always seems like the hardest when it's actually the easiest thing we can do.
- ❖ This requires humility, grace, patience, faith, wisdom, or desperation.
- ❖ Giving up the current state for a state of the greater good.
- ❖ Prayer is calling.
- ❖ I'm going to live the life that's given to me; that's all I can do, rather than the life I think I ought to live and am forcing, going against the Divine flow.
- ❖ Look for addictions or recovery here; it's ok for someone to hit rock bottom—that's where their hope lies.

Death

- ❖ After the great surrender, things can be lost to you—relationships, jobs, careers, things. Remembering your lessons of surrender will lead you to the path of greatest ease of release, which is not to say the transformation is easy.
- ❖ Your life as you had been living it will never be the same. This does not have to be traumatic. There is great rebirth and rejuvenation in releasing what is, to welcome what is waiting for you.
- ❖ Good to embrace this energy with ritual (e.g., burning photos, written lists) in order for you to move on—you must acknowledge an end. This does not have to be traumatic. We do this every New Year's Eve.
- ❖ This phase of the journey represents immortality: that which once was will always be on an energetic level, but it may not have been sustainable. You are complete with this experience.



The Devil



- ❖ Confrontation with fear.
- ❖ This is an invitation to become aware and let go of what no longer serves you. Ask the deep questions: What's holding me back? Where do I hesitate? What am I afraid of?
- ❖ Fear of control (The Emperor) can be big, particularly if it's in the unconscious mind. Work with the High Priestess energy to go to the underworld of your unconscious, where limitations are held.
- ❖ We have a natural instinct. Sometimes in our society, it's difficult to align to our own body, mind, and spirit when that alignment looks very different from what society would say.
- ❖ The work of this card can be overcoming shame of your own humanity. Our bodies and sexuality are highly charged in this culture and a place where "control" overrides our instinctual behavior.
- ❖ It's best thing to own your shadows and bring it into the light.

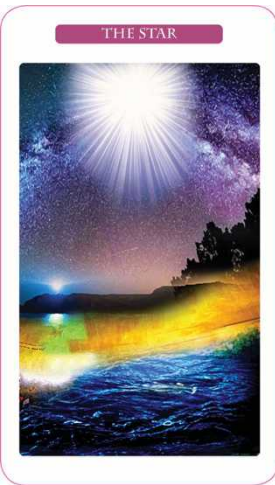
The Tower

- ❖ Confronting fears from The Devil card often shakes things up and creates endings of current phase, people, jobs, situations, careers, etc.
- ❖ Our world gets rocked from its foundation. Sometimes things come off the rails (e.g., divorce, firing, betrayal, something revealed that shocked you).
- ❖ If it's a relationship that fails and you are committed to rebuilding it, you must start from the foundation. Be conscious of all old patterns in order to shift them and not create the same relationship—the same Tower, which will only fall again. You must stay awake.
- ❖ This is an intense time: overwhelming, terrifying, exciting, freeing, and full of potential.
- ❖ Can be divorce—figuratively or literally.



The Star

- ❖ In the face of all this testing, re-focus your priorities and your energy to keep hope and attention on YOUR calling—it's your time: Align to the Divine!
- ❖ Finding your gift—your purpose—in this lifetime. Let that be your guiding motivation for all your dreams, thoughts, actions, energy, and relationships.
- ❖ Not everyone gets to play with the energy of the Star card, it's an extraordinary time of soul and purpose, work, and attention.
- ❖ The Universe is in a position to shower you with generous attention. You may find your own inspiration for generous behavior.



The Moon

- ❖ Intuition. Accepting veiled messages and beauty from the Universe.
- ❖ Sacred Feminine. Your grandmother's lineage is calling your attention. Your ancestors are near—listen, watch, tune in. Honor your parents and family.
- ❖ Dreams increased (literally and figuratively).
- ❖ Love—REAL love—can only come through being in touch with your real feelings. Stop the world to be in touch with your essential self.
- ❖ Tap into the power of your unconscious world; increase your meditations.
- ❖ Phases are in play here; pay attention to be in the flow with them instead of working against them.
- ❖ Ritual is valuable during this time.



THE SUN



The Sun

- ❖ Rejoice! Enjoy the gifts of the Universe! The gifts of being human: laughter, music, art, sex, food, friends, family, fun, creation, movement, etc.
- ❖ Consciousness from all your lessons of the journey allows you to celebrate!
- ❖ Reconnect with your child-like being again.
- ❖ Celebrate your ability to trust and not be afraid.
- ❖ Be at home within yourself.

Judgment

- ❖ Significant awakening.
- ❖ Payoff for the good work you've done through more challenging times.
- ❖ It is as though you were dead or unconscious and are now awakened and conscious.
- ❖ Things are totally different—your acceptance of how you are connecting with everything is new, better, alive!!
- ❖ Change can be hard. Some people will not be able to embrace the celebration immediately. They may only see the challenge of change and the benefit.
- ❖ Turbocharged time with hope and positivity: I'm going to make it!

THE JUDGMENT



THE WORLD



The World

- ❖ Celebrate! You got it!! You did it!! You survived it!! You Thrived!!
- ❖ Whether it's one aspect of your life or a total life experience, it is to be acknowledged and celebrated!!
- ❖ Universal graduation!! Wholeness, completion!
- ❖ Now you get to start the journey all over again, just at a different level for your start point—continuous expansion.
- ❖ Soulmate or a happy marriage (new or sustained)

For further information on Brenda's *Beauty of the Tarot* deck, visit www.Brenda-Rose.com.